



ARPS/CALTOPO
WHERE ON EARTH IS AMATEUR RADIO?

Timothy S. Takeuchi

W6TST

OBJECTIVES/LEVEL SET

- Inspire ham radio operators to tinker with and explore APRS & CalTopo
- I don't pretend to be a total expert or know everything
- I do believe we will all know more as we share experiences and explore features
- My focus has been on how APRS & CalTopo is essential for ARES/RACES

WHY APRS?

- Collect data and communication with digital methods over ham radio frequencies
 - Location – current and past
 - Weather
 - Messages
 - Broadcast Messages
 - Etc....

WHAT IS APRS?

- **APRS** stands for Automatic Packet Reporting System (although it is frequently also called Automatic Position Reporting System.)
- **APRS** was developed in the early 1990's by Bob Bruninga, WB4APR, for tracking and digital communications with mobile **GPS equipped** stations utilizing Amateur two-way radio

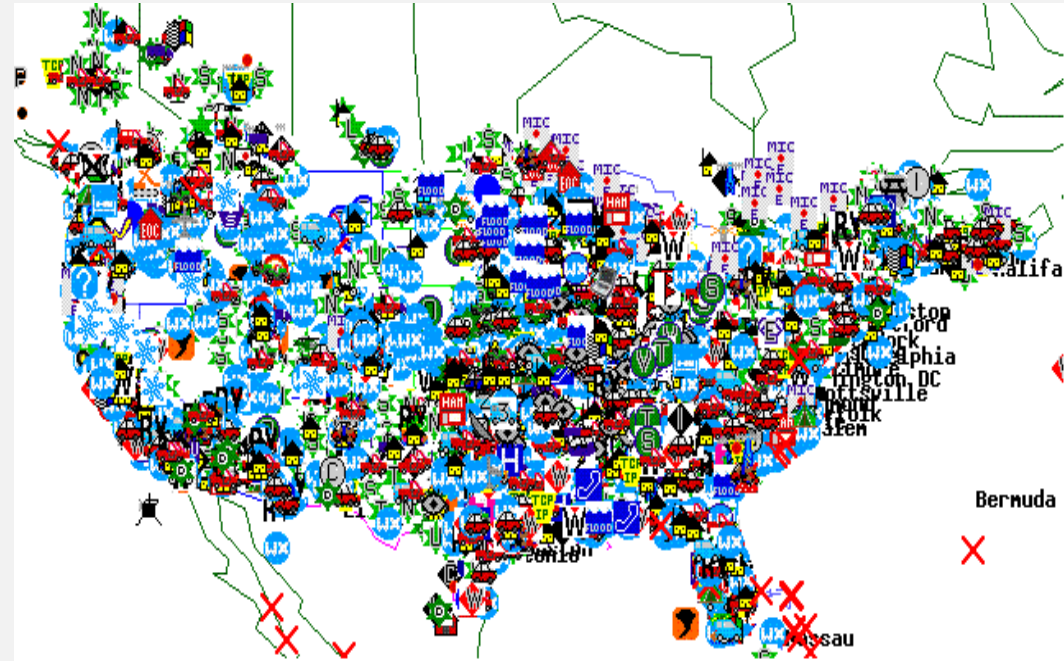
BOB BRUNINGA – “FATHER OF APRS”



- His first experimental protocol was run on a VIC-20 program in 1984 to report the position and status of horses in a cross country endurance run for AMRAD
- He developed the current APRS protocol as part of his research for the US Navy while an Instructor at the Naval Academy in Annapolis, MD. to assist in tracking boats in races on the local waterways.

SCOPE OF APRS

- Over 40,000 users worldwide.
- RELAYS every 20-30 mi called “digipeaters.”
- All linked by home station I-gates
- Global links by Amateur Satellites
- Thousands of Weather stations (ham radio and internet connected)
- Telemetry and data everywhere

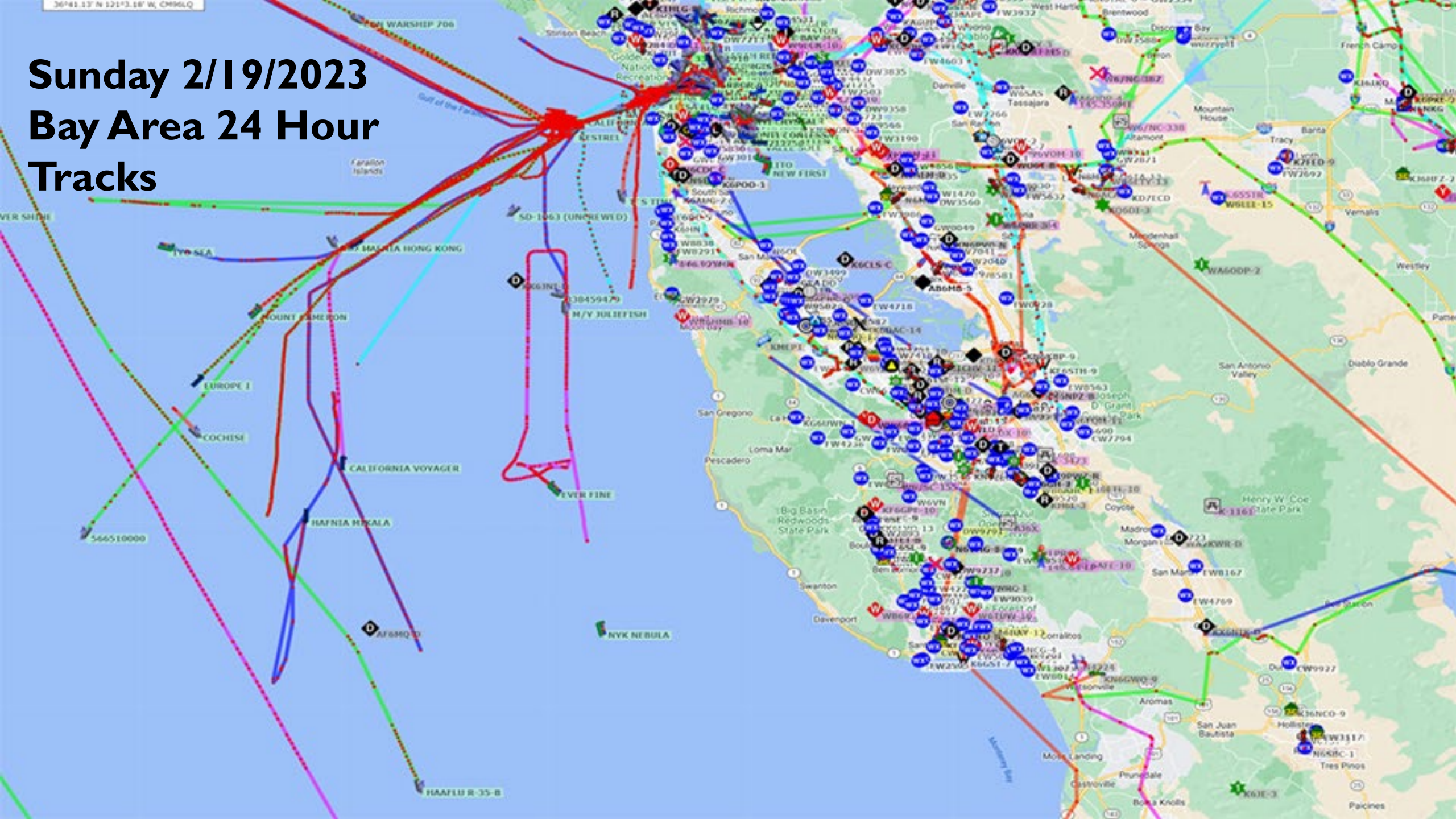


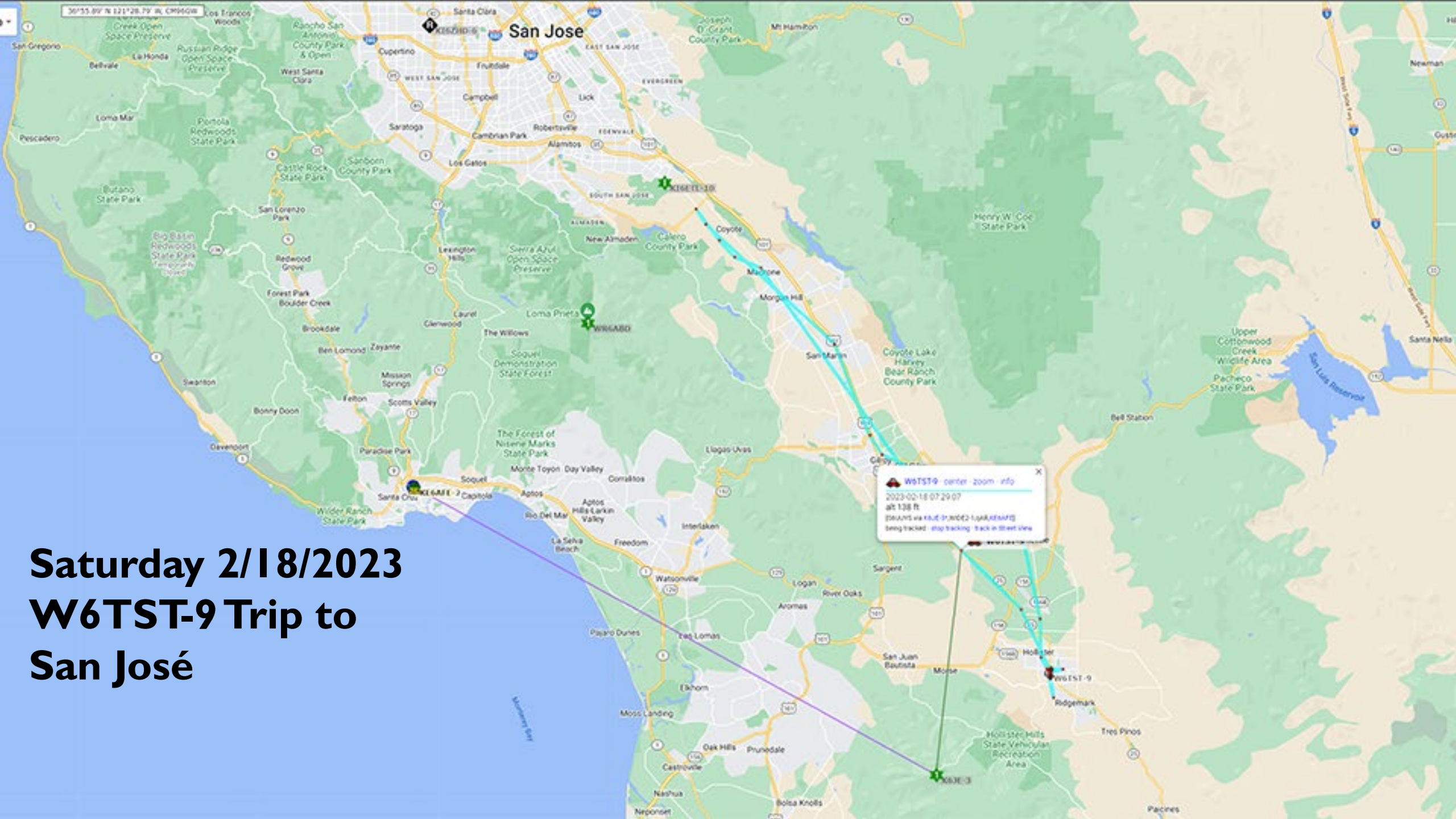
But, only 2% of ham radio users

APRS is a registered trademark Bob Bruninga, WB4APR



Sunday 2/19/2023 Bay Area 24 Hour Tracks

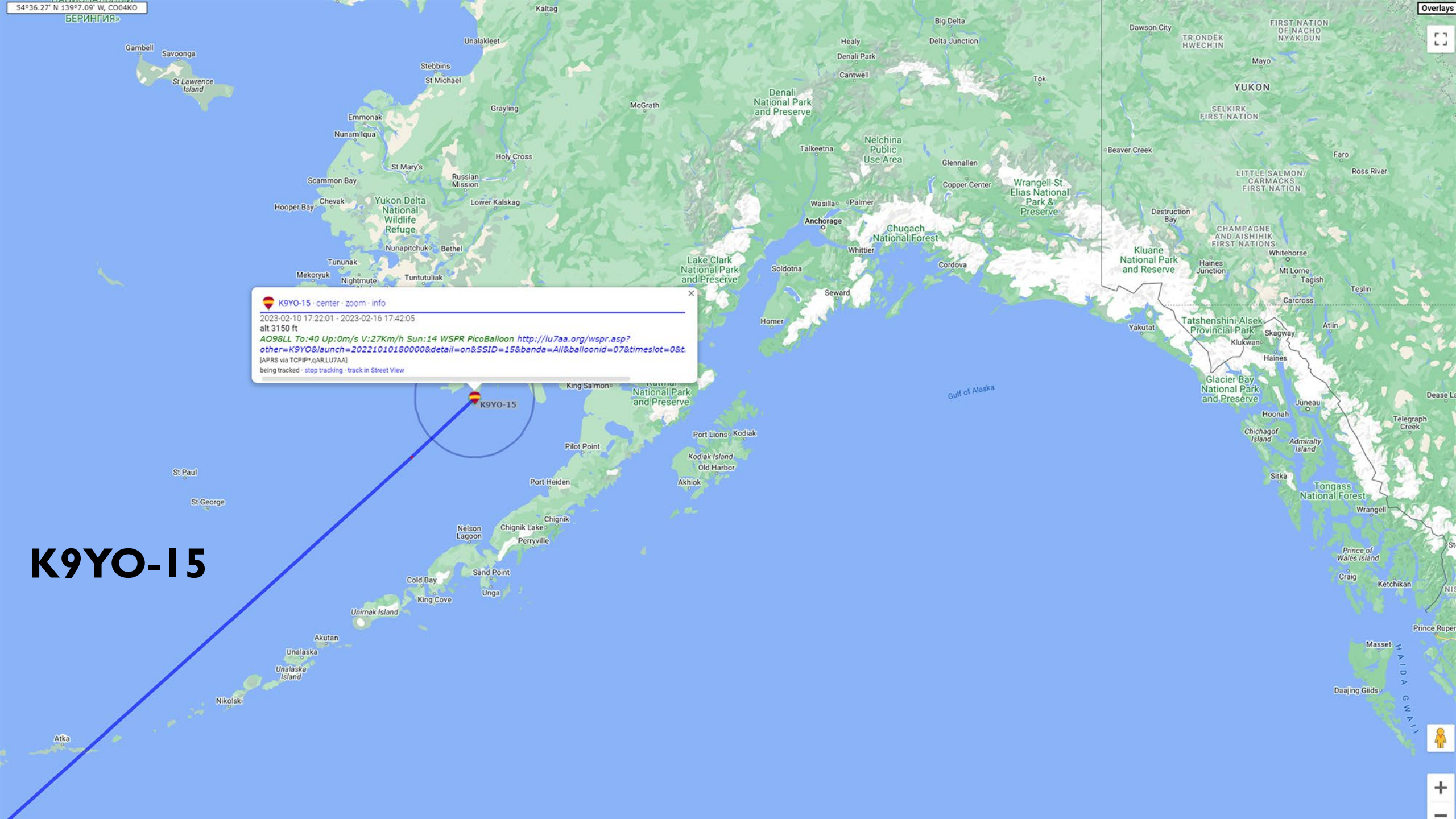





Saturday 2/18/2023

W6TST-9 Trip to San José

W6TST-9 center zoom info
2023-02-18 07:29:07
alt: 138 ft
(points via route track(s) log(s) info)
being tracked stop tracking back to street view



K9YO-15

 **K9YO-15** · center · zoom · info

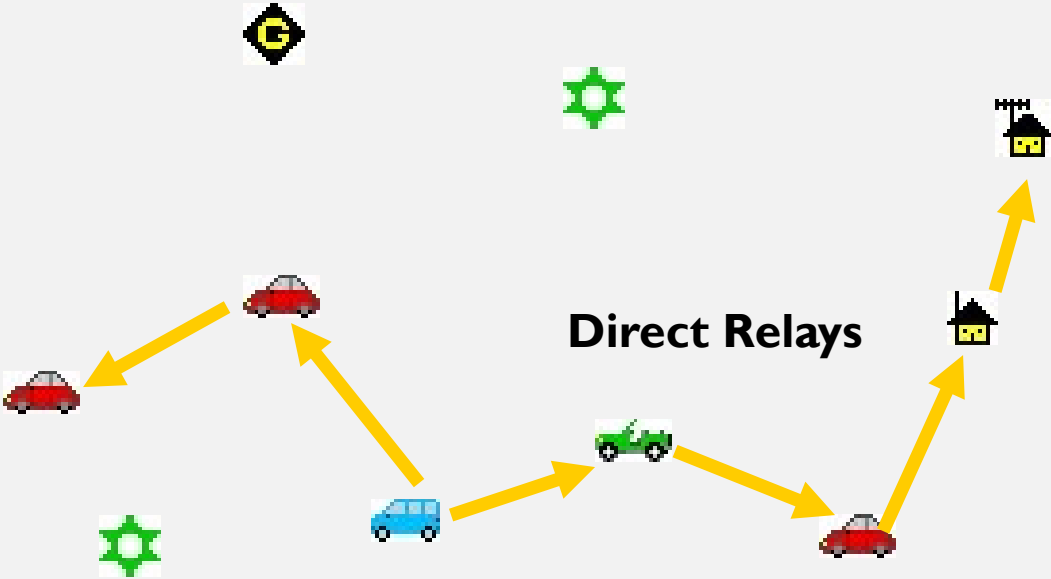
2023-02-10 17:22:01 - 2023-02-16 17:42:05
 alt 3150 ft
 AO98LL To:40 Up:0m/s V:27Km/h Sun:14 WSPR PicoBalloon <http://lu7aa.org/wspr.asp?other=K9YO&launch=20221010180000&detail=on&SSID=15&banda=All&balloonid=07×lot=0&t>
 [APRS via TCP/IP, GARLUTAA]
 being tracked · stop tracking · track in Street View



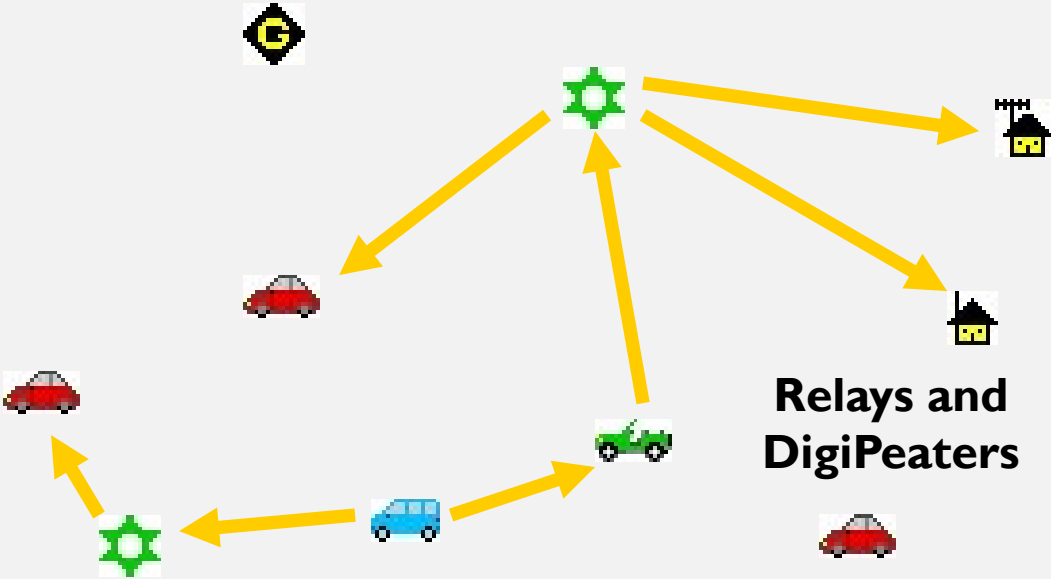
WHY HAM RADIO?

- Current debate asking if FT-8 is Ham Radio or destroying Ham Radio
 - If your purpose of Ham Radio is to have discussions with people around the world – maybe not.
 - If your purpose of Ham Radio is to experiment, gather data, and play with radio technology, then YES!
- Ham Radio can help by finding ways to find answers outside of ordinary methods

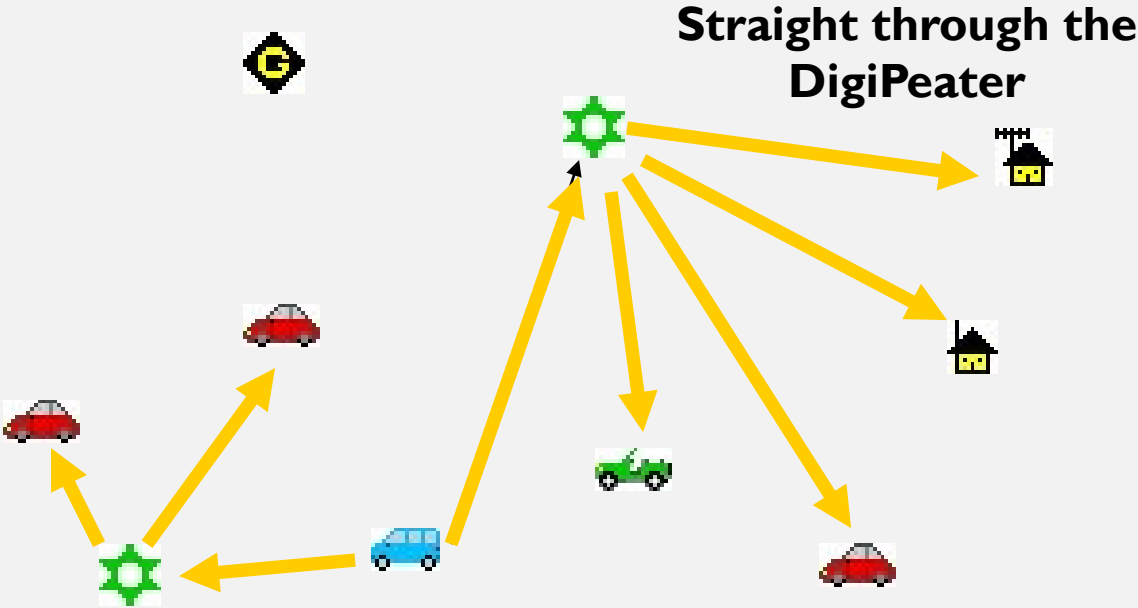
HOW DOES THE SIGNAL TRAVEL?



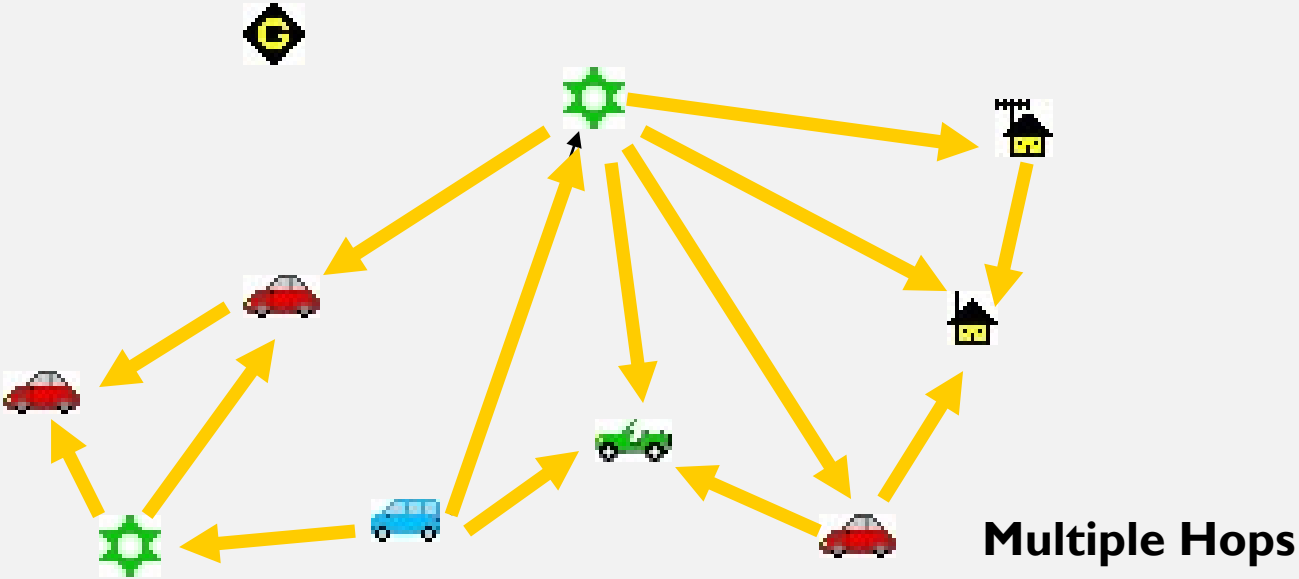
HOW DOES THE SIGNAL TRAVEL?



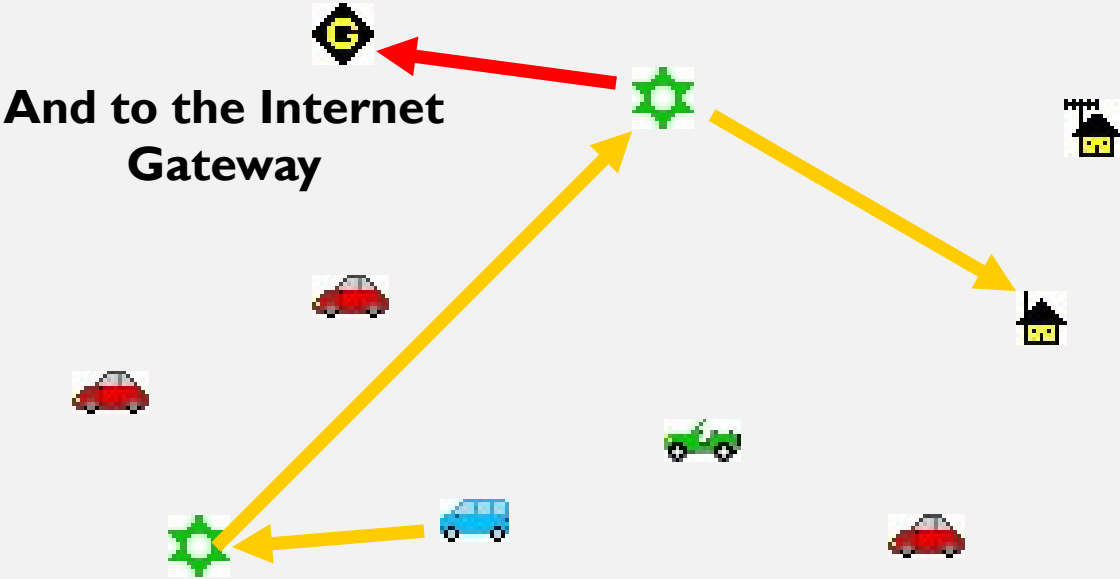
HOW DOES THE SIGNAL TRAVEL?



HOW DOES THE SIGNAL TRAVEL?



HOW DOES THE SIGNAL TRAVEL?



PROGRAMMING YOUR RADIO

- Call Sign w/ Suffix
- Digipeater Path
- Group ID (Digital DMR – BM APRS 310999)

CALLSIGN W/ SUFFIX

- Suffix (Suggestion):
- 0 – Primary Station? (not supported on some equipment)
- 1 – 4, 15 – Additional station, mobile, weather, etc.
- 5 – Other Networks
- 6 – Special Activity – Satellite
- 7 – Walkie Talkie
- 8 – Boats, Sailboats, RV or secondary mobile
- 9 – Primary mobile

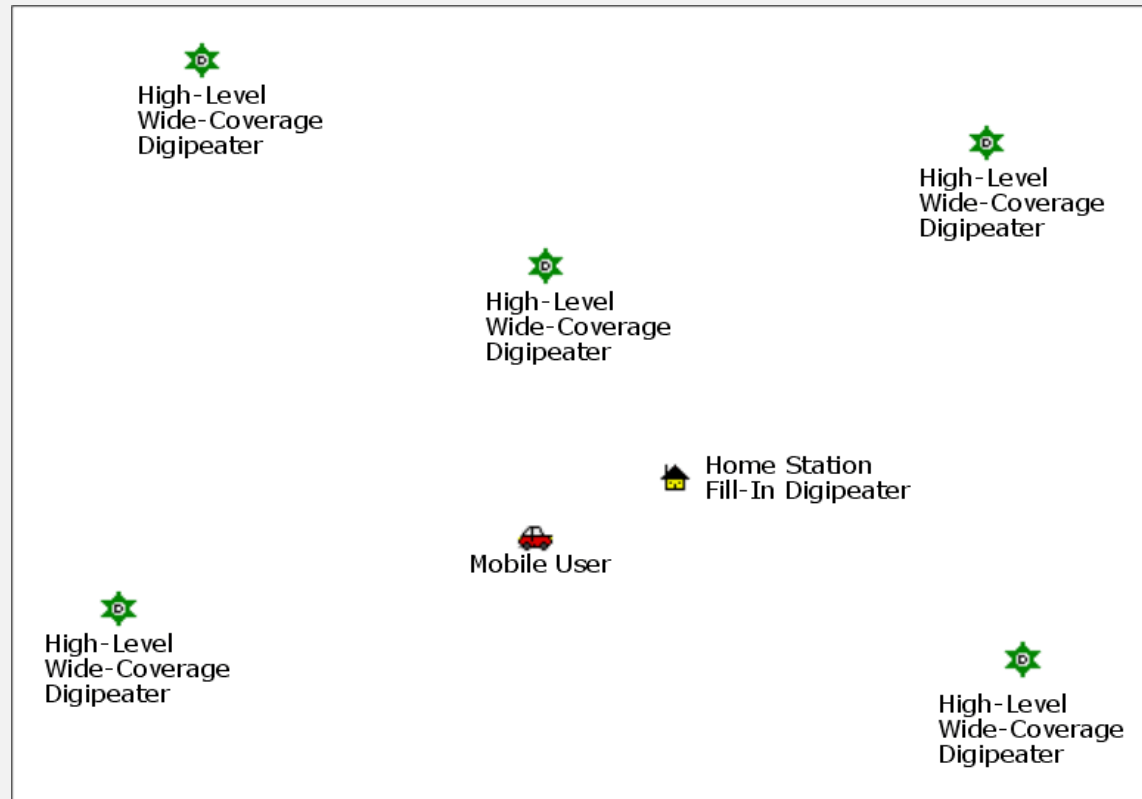
CALLSIGN W/ SUFFIX

- Suffix (Suggestion):
 - 10 – Internet, Igates, Echolink, Winlink, AVRS, APRN, etc
 - 11 – Balloons, aircraft, spacecraft, etc
 - 12 – APRStt, DTMF, RFID, devices, one-way trackers
 - 13 – Weather stations
 - 14 – Truckers or generally full time drivers
- Examples:
 - N6SBC-12 APRS Tracker
 - W6TST-9 Tim's vehicle

DIGIPEATER PATH

- Suggestion:
- WIDE1-I,WIDE2-I
 - Wide1-I uses a fill in digipeater if applicable
 - Wide2-I says send to a digipeater and consider this message done afterwards

APRS BACKGROUND



WHY CALTOPO?

- Tracking APRS signals
- Planning a event (Sea Otter Classic, Discovery Classic, Parades, etc)
- Planning a field event (SOTA, POTA, etc)
- Understanding signal paths

CALTOPO/SARTOPO BACKGROUND

- Matt Jacobs started SARTopo in 2010 to solve problems with his SAR background.
- CalTopo was launched in 2011 for recreational purposes
- CalTopo started full time for Matt Jacobs expanding with other employees in 2017
- CalTopo & SARTopo merged into one product with different emphasis options 2020-2022

WHY DID WE SWITCH TO SARTOPO?

- We previously used another program for SAR purposes
- I saw SARTopo in a technical track at SAREX 2017
- September 2017 RACES got called out to help with a search. We tried to use the existing SAR program and the map wasn't helpful and we needed to render a map that was more useful, but doing so never processed completely because of limited internet coverage.
- I tried SARTopo and with the limited internet coverage was up and operational in minutes.
- We've used it ever since for SAR and event usage (Sea Otter & Discovery)

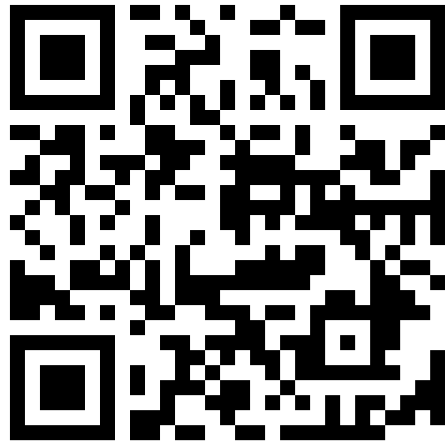
PREVIOUS VS NOW

- Previously, we would use the standard SAR mapping program
- Take tracks from a APRS program (none of them were as good) and try to transfer the track into the map
- Cross reference outside maps (i.e. Hollister Hills or Ford Ord trail maps)
- CalTopo allows all of this in one place with different parts selectable as well as multiple shifts

HOW CAN I GET IN ON SBC RACES CALTOPO?






- Apply for a log in by emailing w6tst@arrl.net
- Once set up, you can log in with your existing email
-

San Benito County RACES



Read-only access

Log in to save this map to your account:

-  Continue with Google
-  Continue with Apple
-  Continue with Facebook
-  Continue with Microsoft
-  Continue with Yahoo

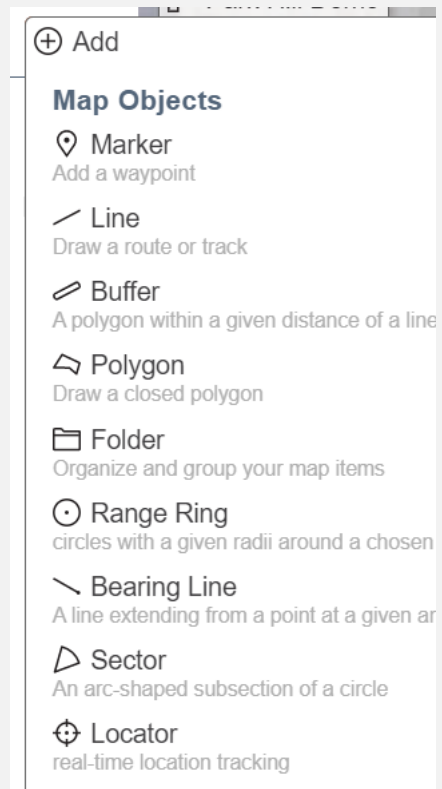
Remember Me

[Team Login](#)

[Sign Up](#)

ADD YOUR APRS TO CALTOPO

- On a SAVED map, click on “ADD” and then “Locator”



- Click on “Live Track - Ham Radio (APRS)”

The image shows a 'Track Details' form with a dark blue header. The form is divided into two sections: 'Device Info' and 'Track Attributes'.

Device Info

- Type: Ham Radio (APRS)
- Call Sign:

Track Attributes

- Label:
- Folder: (dropdown menu)
- Line Weight: (dropdown menu)
- Line Opacity: (dropdown menu)
- Color:
- Style:

HOW TO DEVELOP A MAP

- Early in setting up data on your map, you'll be asked to name your map, set the mode (SAR or Recreation) and save it to your individual account or the team account

Save As

Map name:

Mode: ▾

Save to account ▾ account

Share Your Map

Base Permission: Private - only you can access this map, no exceptions
 Secret - anyone with an access code below, or who has already bookmarked the map
 URL - anyone with the map's URL
 Public - make it easy for other CalTopo users to find this map

Tell Us About Your Map

HOW TO DEVELOP A MAP

- Early in setting up data on your map, you'll be asked to name your map, set the mode (SAR or Recreation) and save it to your individual account or the team account

Save As

Map name:

Mode:

Save to your: account

Share Your

Base Permis: access this map, no exceptions

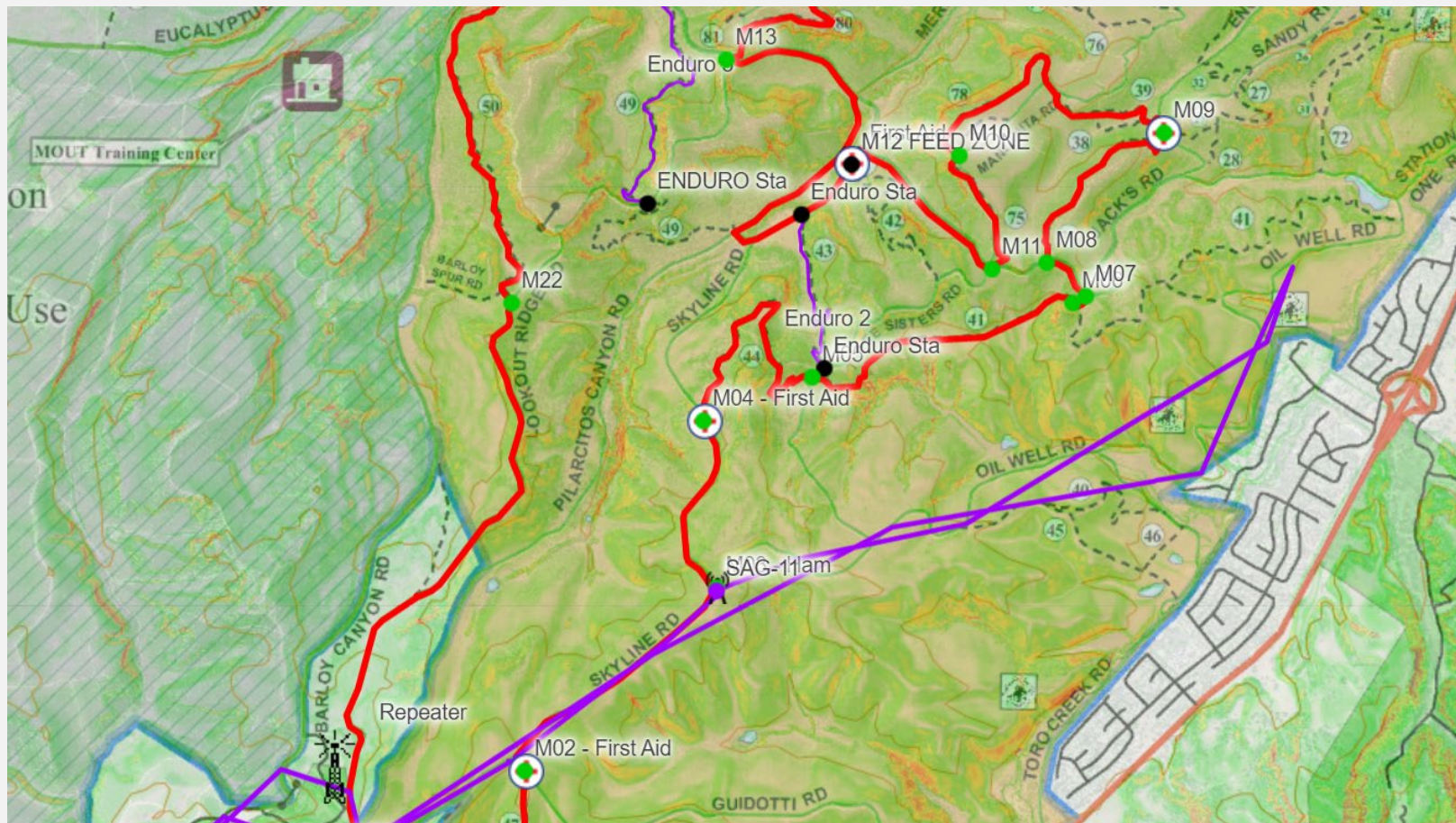
Secret - anyone with an access code below, or who has already bookmarked the map

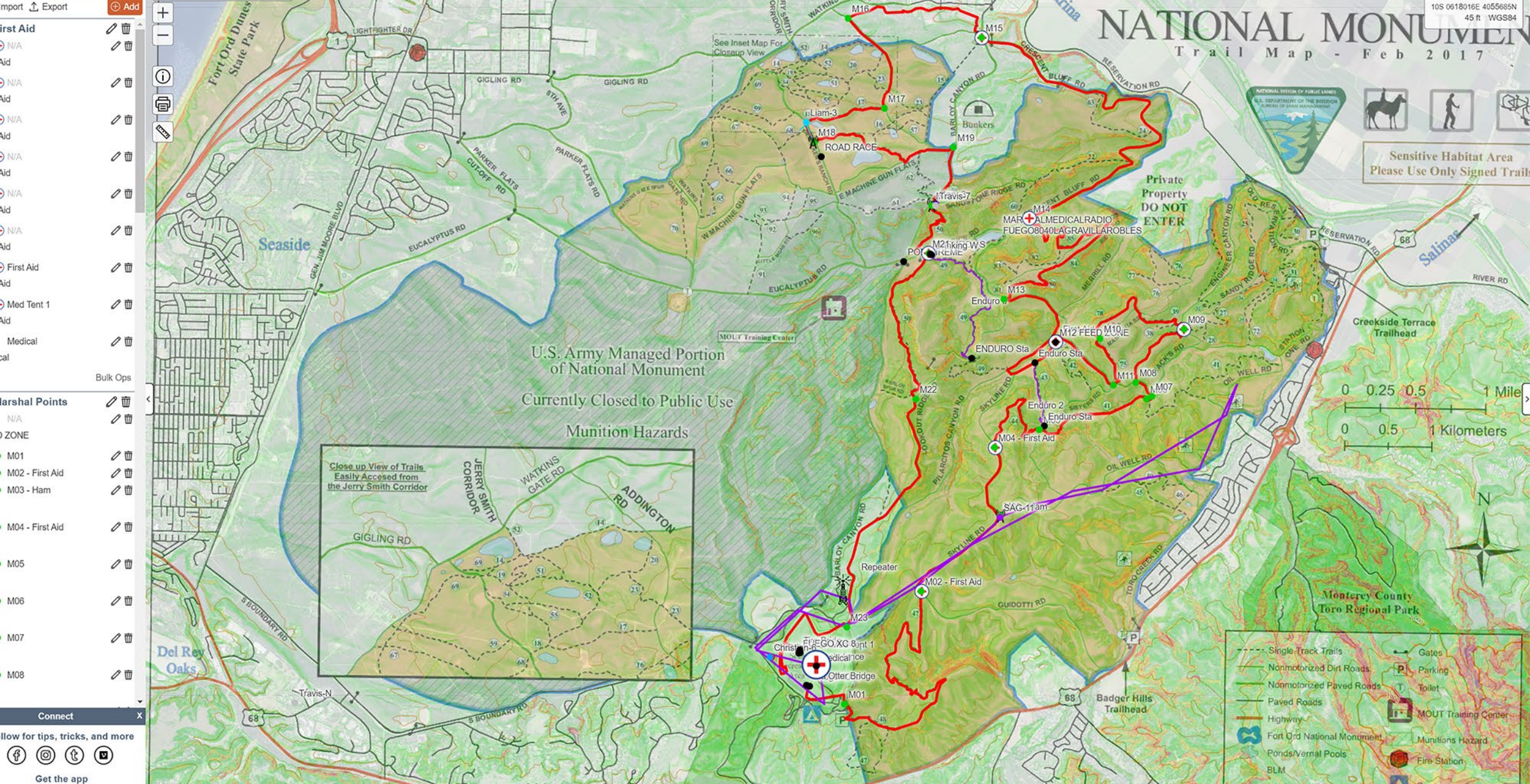
URL - anyone with the map's URL

Public - make it easy for other CalTopo users to find this map

Tell Us About Your Map

DEMO – SEA OTTER CLASSIC



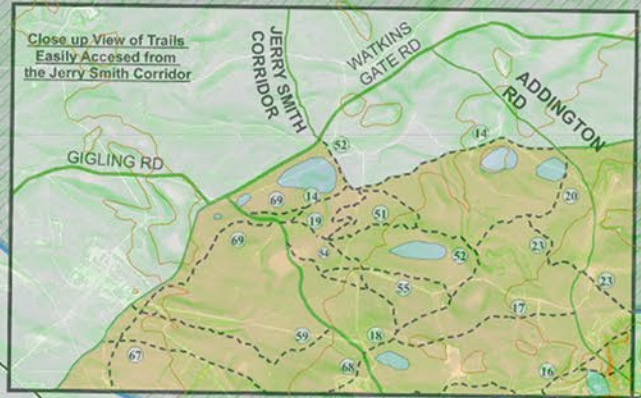


Fort Ord National Monument Trail Map - Feb 2017

36.63943, -121.67986
10S 0618016E 4055685N
45 ft WGS84

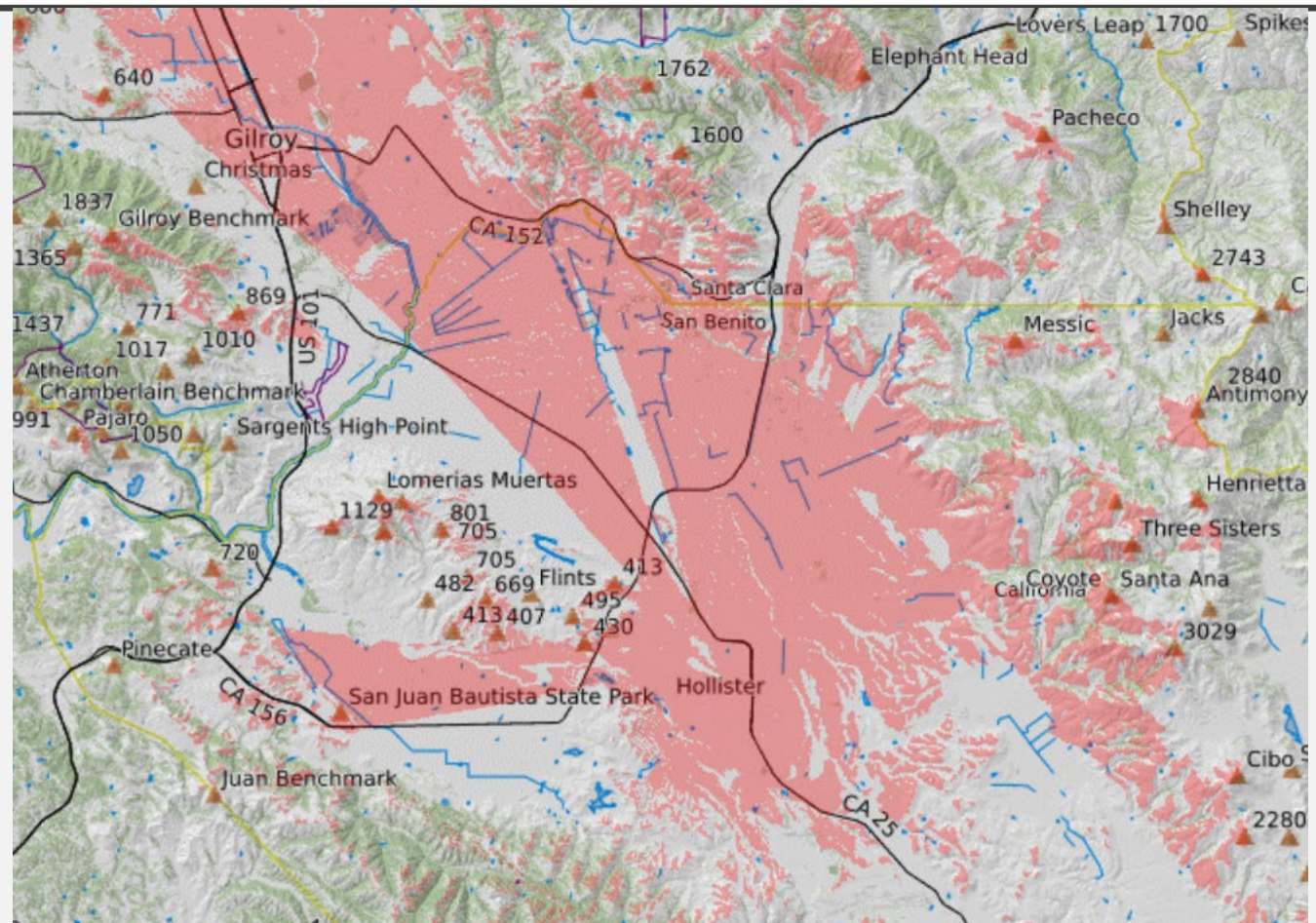


Sensitive Habitat Area
Please Use Only Signed Trails



- Single Track Trails
- Nonmotorized Dirt Roads
- Nonmotorized Paved Roads
- Paved Roads
- Highway
- Fort Ord National Monument
- Ponds/Vernal Pools
- BLM
- Army
- State Parks
- Gates
- Parking
- Toilet
- MOUT Training Center
- Munitions Hazard
- Fire Station
- Campground
- Trail Number

DEMO – PARK HILL REPEATER



Map Objects **Ctrl-O**

↓ Import ↑ Export **Add**

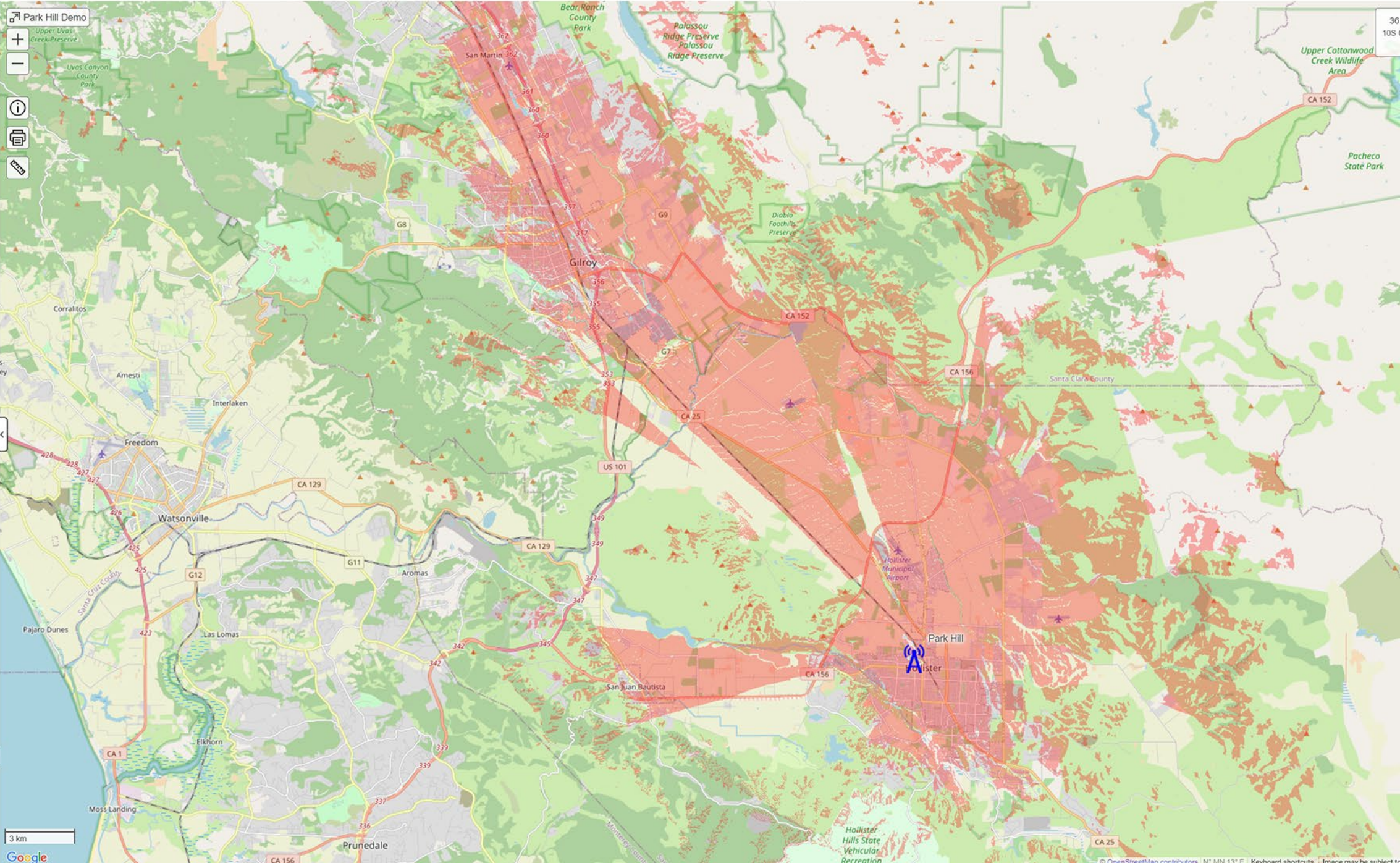
Markers

Park Hill

Terrain Modeling

N/A

Bulk Ops



Connect

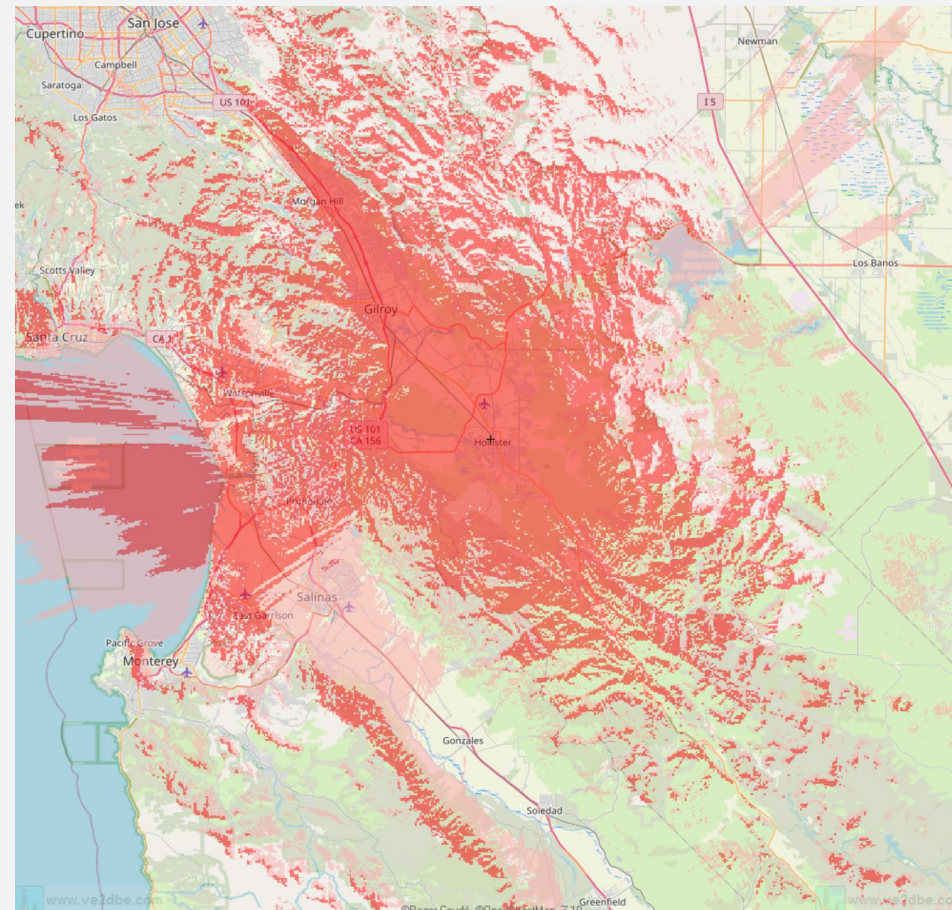
Follow for tips, tricks, and more

Get the app

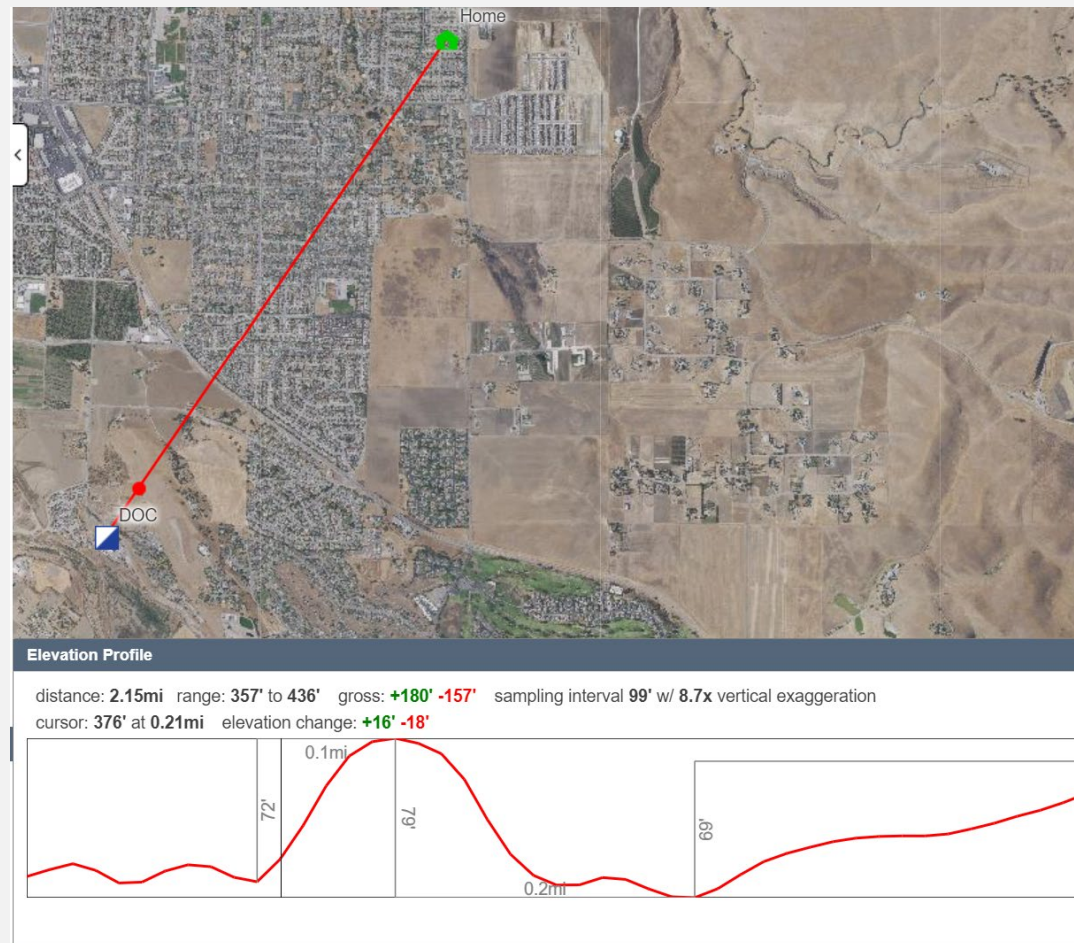
3 km

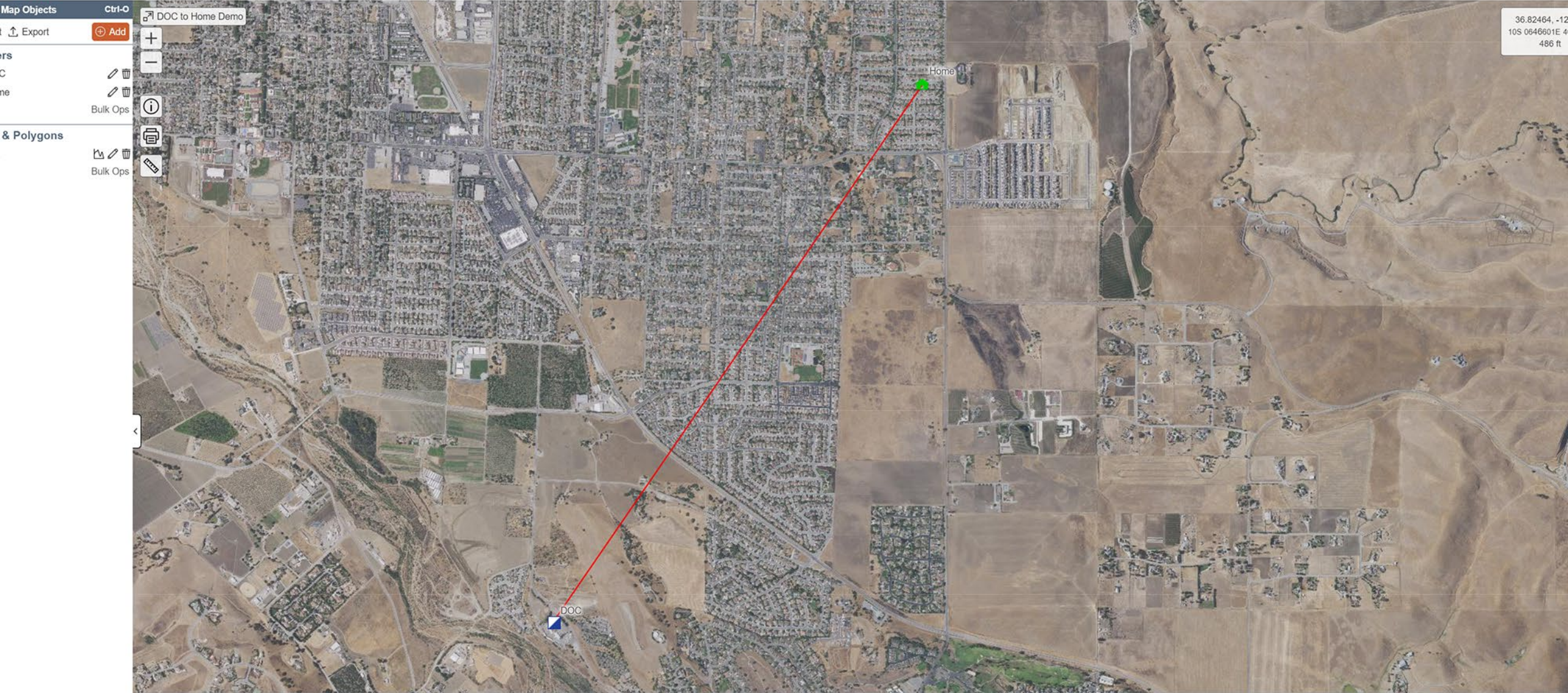
Google

DEMO – VE2DBE.COM



DOC TO HOME





36.82464, -12
10S 0646601E 4
486 ft

Map Objects **Ctrl-O**

Export **Add**

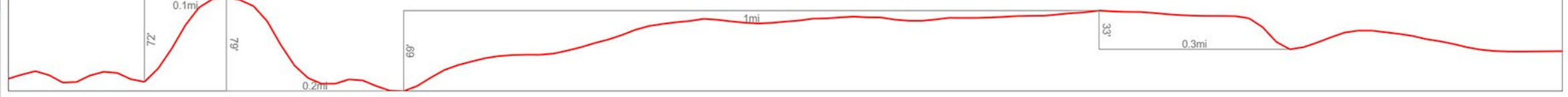
Bulk Ops

& Polygons

Bulk Ops

Elevation Profile

distance: 2.15mi range: 357' to 436' gross: +180' -157' sampling interval 99' w/ 8.7x vertical exaggeration
cursor:



Connect

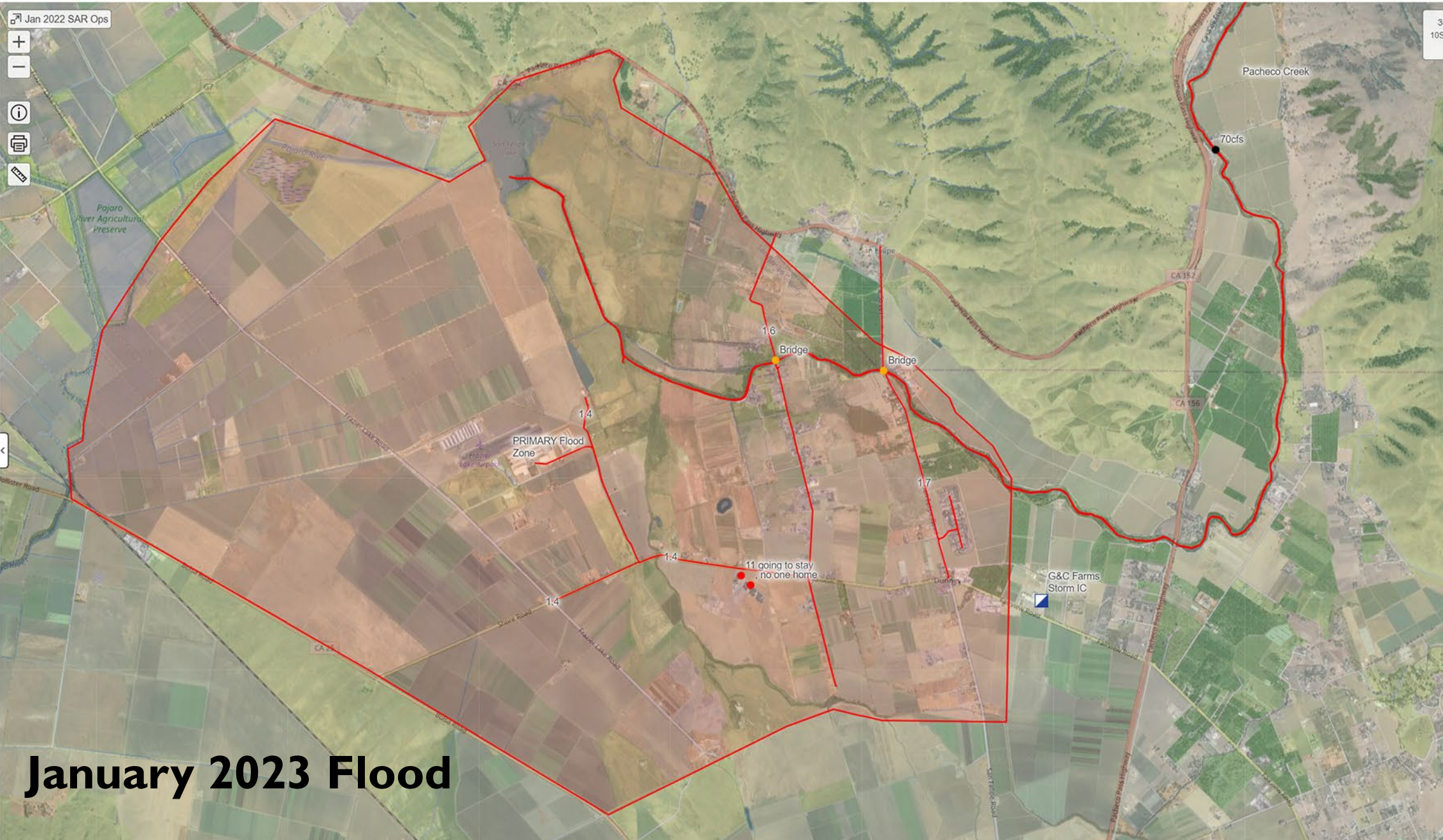
for tips, tricks, and more

Get the app

get it on the App Store

get it on Google Play

- Map Objects** Ctrl-O
- - 1-11-23 Animal Reco...
 - 1-14-23 Levee Break...
 - 1-4-23 Warning (+)
 - 1-9-23 Evacuation O...
 - 1-SBC River (+)
 - 2-SBC River (+)
 - 3-SBC River (+)
 - S/O Rescue Stats 1-...
 - Markers**
 - , no one home
 - , 11 going to stay
 - Bridge
 - Lovers Lane
 - Bridge
 - San Felipe
 - ▣ G&C Farms Storm IC
 - Stagging Arealincident Incident Command
 - Multi Agency Response
 - SBC ACS/RACES DOC
 - Sheriffs Office
 - Markers For Evacuation Warning. Deployed 1130 at GC on Fairview RD
 - Bulk Ops
 - Lines & Polygons**
 - Anzar flood zone
 - South Side Road , T...
 - Flood Zone
 - Bulk Ops
 - Operational Periods**
 - OP1
 - OP2
 - Assignments**



January 2023 Flood

ACTION ITEMS - APRS

- If you have an APRS capable radio – try it!
- Check out aprs.fi and see what you can see
- If you want to tinker – there are APRS apps on iPhone and Android

ACTION ITEMS - CALTOPO

- Try it! Request a team account and explore feature and try stuff.
- Track your car, bicycle, etc on a map with a APRS tracker (radio or app)
- Training.CalTopo.com or...
- <https://saracademy.thinkific.com/courses/caltopo> free course on SAR Team Management



THANK YOU!

<https://sbcara.org/forum>